

Quick Guide for TeamBoard Touch Screen

Installation

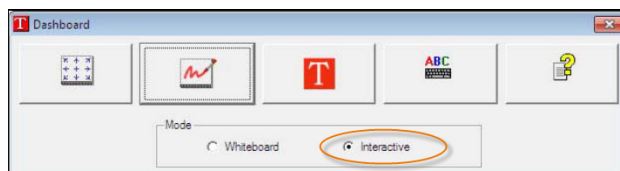
1. Download the TeamBoard drivers for Windows/Mac from www.teamboard.com.au/support_and_drivers.html or use the installation CD available in the High Use Collection
2. Run the installation and select the driver (supported controllers) for *TeamBoard, IR, USB*



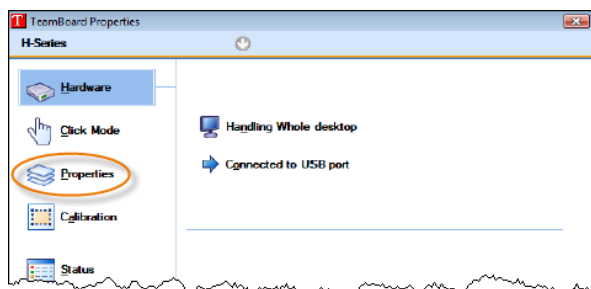
3. Follow the remaining prompts to complete the installation

Configuration

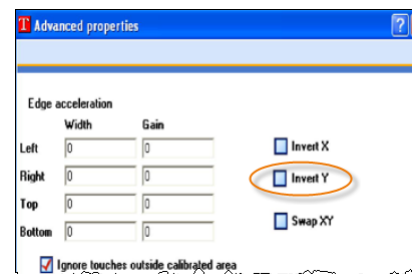
1. Launch the TeamBoard Dashboard by double clicking **T** from your computer's system tray. Set the mode to *Interactive* (this can only be done when the USB cable from the touch screen is NOT connected to your laptop)



2. From your computer's Control Panel, select the TeamBoard icon **T**. The following screen is displayed:




From this screen, select *Properties* and then *Advanced*. The following screen is displayed:





Ensure *Invert Y* is NOT selected

Calibration

The touch screen must be calibrated to correctly associate the touch screen surface with your computer environment. Calibration must be done each time you connect to a new touch screen because the size of each touch screen can vary

1. Connect the USB cable from the touch screen to your laptop
2. Connect your laptop to the LCD screen that has been mounted with the touch screen. Ensure the LCD screen shows the same display as your laptop (you will need to provide your own cable for connecting your laptop to the LCD screen)
3. Select  from the TeamBoard Dashboard and using the touch screen, touch the nine points of the projected image where the lines intersect. As each point is touched, a green check mark is displayed
4. Once calibration has been completed, the touch screen can be used

Tips

1. Touching the screen for more than 3 seconds emulates a right mouse button click
2. An interactive keyboard can be used with the touch screen by selecting  from the TeamBoard Dashboard
3. Use the touch screen as a whiteboard by selecting TeamBoard Draw  from the TeamBoard Dashboard

Help

Online help can be accessed from the TeamBoard Dashboard  and TeamBoard Draw. Refer to www.library.unsw.edu.au/about/facilities/touchscreens.html for more information